

**AVVENTU  
RE NELLA  
TERRA DI  
MEZZO**

**Scheda di  
confronto  
degli Eroi**

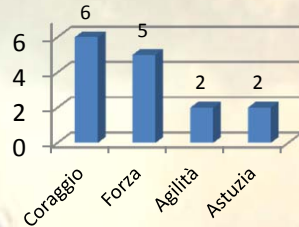
**Argalad**

Esploratore: Una volta per turno, puoi guardare tutti i segnalini Mostro in un luogo adiacente.



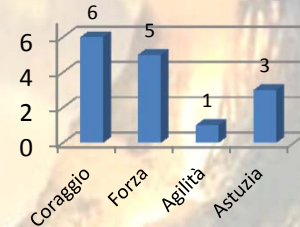
**Beravor**

Esperta di Sopravvivenza: Quando riposi in un luogo diverso da un Rifugio, puoi curarti o ricevere addestramento.



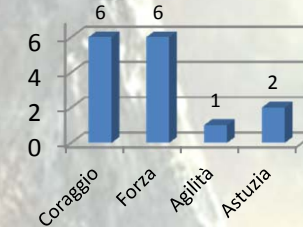
**Eleanor**

Nobile Lignaggio: Una volta per turno, puoi guadagnare 1 segnalino Favore se completi un'Avventura o ti consulti con un personaggio.



**Eometh**

Cavaliere Esperto: Inizi il gioco con una carta Oggetto "Cavallo".



**Thalin**

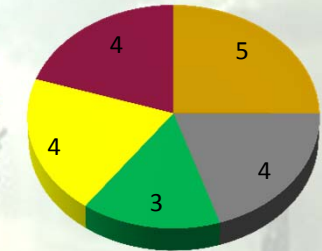
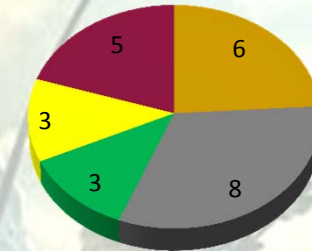
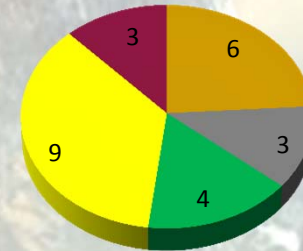
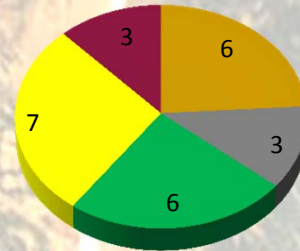
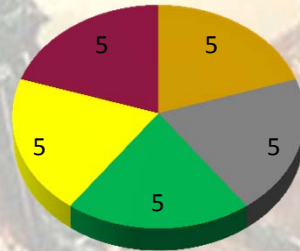
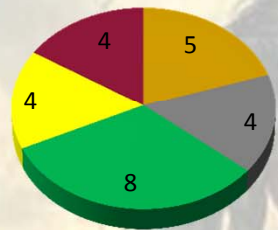
Volontà di Ferro: Il tuo turno non termina se non riesci a sconfiggere un avversario in combattimento.



**Abilità**

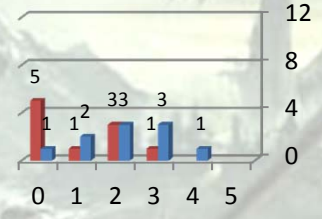
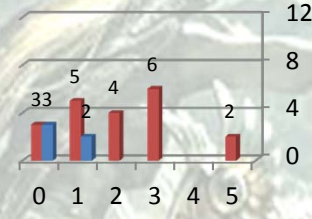
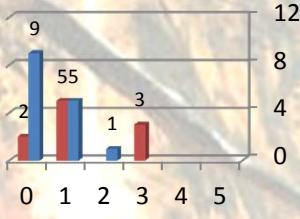
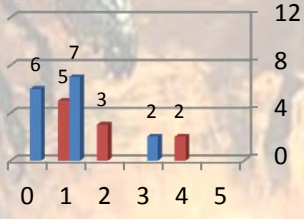
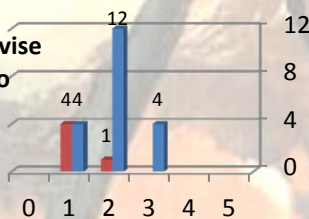
**Movimento**

- Collina
- Montagna
- Foresta
- Pianura
- Palude



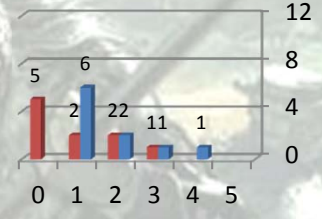
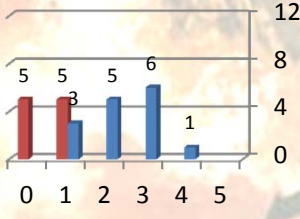
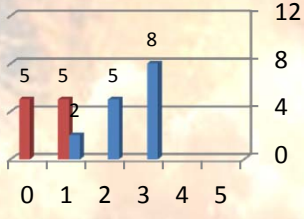
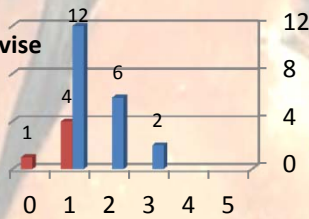
**N° carte divise per Attacco**

- A Distanza
- Corpo a Corpo



**N° carte divise per Difesa**

- A Distanza
- Corpo a Corpo



**N° carte divise per Forza**

- A Distanza
- Corpo a Corpo

